

# What's on Waverley?

Your E-Newsletter  
Easter 2023



Waverley Education  
Foundation Trust

## Executive Principal's Message

### Dear Parent/Carer

As we compile this newsletter, I cannot believe that two thirds of the academic year have gone. Many of our students and families will be fasting as part of the holy month of Ramadan and many students will be preparing for the SATs, GCSE, A Level and BTEC examinations they will be sitting after the Easter holidays.

It's been another eventful term at Waverley Education Foundation Trust (WEF). We have had many opportunities to provide our students with memorable learning experiences as well as celebrating some of the wonderful work that we are doing at WEF at a local and national level.

Below are just a few of the many highlights of the term.

#### January

- Mr Hire took up the post of Principal at Waverley School
- The Kimichi Symphony Orchestra carried out a rehearsal at Waverley School. This was the first time that a full symphony orchestra has performed at the school.
- Year 11 students from Studio College visited Symphony Hall to see live performances and workshops from some of the poets they were studying as part of their English Literature course. The students and staff had the opportunity to meet the legendary poet John Agard and the former Poet Laureate Carol Ann Duffy.
- Our Year 2 teacher Dr Bodhanker was invited to the Houses of Parliament to talk about Her Majesty Queen Elizabeth II and Her service. The event was titled 'Our Sovereign Queen' which was a musical tribute to Her Majesty.
- Students in Years 5, 6, 7 and 8 went to Resorts World Arena to take part in the national singing project "Young Voices".

#### February

- Mrs Kler was appointed as Principal at Waverley Studio College.
- Students in Year 1 and Year 5 visited The National Space Centre in Leicester. The students enjoyed exploring the six interactive galleries, the UK's largest planetarium, and the iconic 42m high Rocket Tower.
- The Year 11 Student Leadership Team at Waverley School and the School Council worked together to raise funds for the Turkey and Syria Earthquake appeal.
- The Box Clever Theatre Company put on an interactive performance of 'Macbeth', followed by a series of very active workshops to help develop and deepen students' understanding of the famous Scottish play for our Year 11 students at Waverley Studio College.

#### March

- Year 6 students visited the Birmingham Hippodrome Theatre to see the iconic ballet Swan Lake.
- As part of our Business BTEC course we were honoured to welcome the legendary Levi Roots to Studio College to talk about his journey that took him from his humble beginnings to Dragons Den and the success thereafter in producing his now famous Reggae Reggae Sauce. Levi's story was both humbling and inspiring.

On behalf of all the staff, I would like to thank you all for your continued support this year. We wish you a safe and restful holiday and we look forward to welcoming our students back to school on Monday 17 April 2023 after the Easter holidays.

S. Farar

Reception  
Fun Activities  
(Page 2)



Tony Bradman  
(Page 3)



English  
(Page 6)



PE News  
(Page 8)



6th Form NEC  
Trip  
(Page 14)



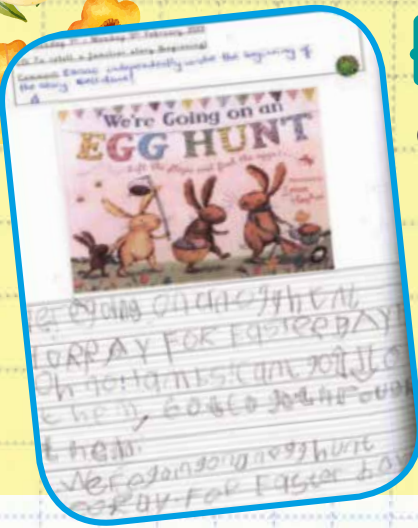


# RECEPTION

## Parties and Celebration

Children in the Resource Base have explored the topic 'Parties and Celebrations' through a variety of texts and activities. Lots of visual literacy has been included to support the topic including 'Room on the Broom' and 'We're Going on an Egg Hunt'.

Mohammed's favourite lesson, was creating a magical potion to check whether his prediction was correct... He was right and the potion did bubble, sparkle and shine!



## FUN ACTIVITIES

Children in the Resource Base engaged enthusiastically in lots of fun activities this half term. They baked cup cakes, conducted a magic potion science experiment and made their own magic wand. They also went on a chocolate Easter egg hunt and created their own work of art inspired by Vincent Van Gogh's 'Starry Night'.



## Money! Money! Money!

In Mathematics, children have been strengthening their ability to add, subtract and multiply single and double digit numbers, as well as counting in pence and pounds. They have learnt the names and properties of 2D and 3D shapes as well as explored place value of teen numbers.



## HEALTHY EATING

'Healthy Eating'. This will encourage children to make better diet choices and support the development of healthier eating habits. Key texts include:

- Kitchen Disco - Clare Forges and Al Murphy
- Little Pea - Amy Krouse Rosenthal
- Fruit Bowl - Mark Hoffman
- Little Pea - Amy Krouse





# Y2



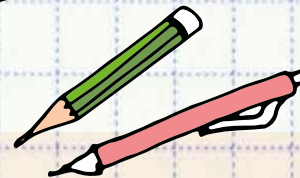
## ECO PARK

To support learning in Science lessons, children have visited the Eco Park to explore different types of habitats. The workshop facilitator talked to Year 2 about the Eco Park and how it hosts different types of animals and plants. The facilitator was impressed by our pupils' articulation and excellent behaviour.

## Y5 Out Of This World...

As part of our Science topic: **Earth and Space**, Year 5 children had the exciting opportunity to visit **The National Space Centre (Leicester)**.

The museum is the home of six interactive galleries, the UK's largest planetarium, and the iconic 42m high Rocket Tower, the award winning National Space Centre is an out of this world experience! Well done to the children for displaying exceptional behaviour throughout the trip.



## Tony Bradman

### An inspiring chat with Tony Bradman

Our Year 5 children have been very fortunate to have a virtual visit from Tony Bradman, author of *Viking Boy* and a version of *Macbeth* that the children have been reading.

During the session, children were taught how to write like an author, the process Tony goes through when he is gathering ideas, drafting and writing.

Children asked many interesting questions and were inspired by Tony to continue writing creatively.





# West Midlands Self-Esteem Programme



Year 5 children visited Bordesley Green Allotments and participated in a range of self-esteem and confidence building sessions.

Children had to work together to solve a range of problems such as using ropes and carrying a bucket across a room without dropping it. The challenge was to carry all of this out without touching the bucket! Other activities involved the 'floor is lava' – pupils were creative and communication was strong in deciding how to use the pallets to move from one side of the cone to the other without touching the floor.



## Y6

## KNIFE CRIME ASSEMBLY

Police Constables Nathan and Jessica spoke to our Year 6 pupils about knife crime. The assembly helped raise awareness and build resilience against the negative influences around us.

Pupils learnt about the dangers of knives, why people carry knives and how knife crime affects them and their families.





# WORLD BOOK DAY

2 MARCH 2023



World Book Day 2023 was a huge success as children across the school celebrated the power of reading and storytelling.

In the Primary phase, we were lucky enough to be visited by two award-winning authors over the spring term.

Tony Bradman started the celebrations early, by visiting our pupils in Year 5 to discuss Viking Boy and his retold version of Macbeth. Year 5 had the opportunity to explore both texts and it was amazing to be able to talk live to the author who wrote them, about his experiences and his writing process.

The author Billy Bob Buttons then came into school to run workshops with all pupils from Years 1 to 6. The workshops focused on how to write your own stories, from using adjectives and similes to make your writing more interesting to how to write effective adventure stories.



## ALL DRESSED UP!



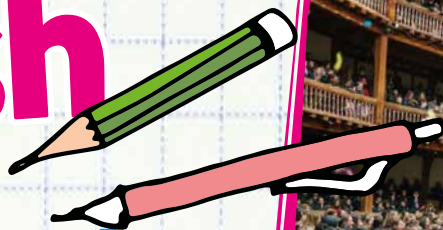
On World Book Day teachers and staff from across the primary phase dressed up as their favourite book character, to support this, children were asked to bring in their favourite book to share with their class.

Staff and children spent the day talking about books and authors, their favourites and the ones they would like to read more from. Book characters appeared around the school and children could be heard discussing which character is from which book throughout the day.

To top it off the primary hall became Hogwarts great hall for the day, complete with Dumbledore's lectern and floating, magical candles.



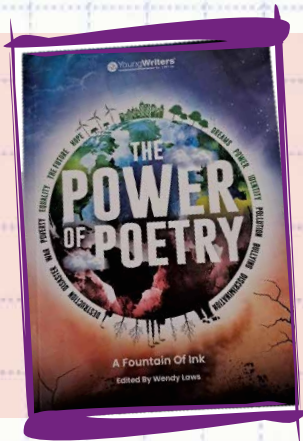
# At the Globe: to be or not to be?



Our Year 7s delighted in the noises, sounds and sights that greeted them in the welcoming city of London.

All eyes fixated on the one and only Globe Theatre, as the opening act of *The Tempest* unfolded, leaving students and staff in awe of Shakespeare's captivating storyline. Here, students learned the importance of forgiveness, love, and family, whilst enjoying the chaos and comedy caused through some of the characters. Such a stunning adaptation of the play that allowed students to experience Shakespeare beyond the classroom.

By the end of it all, as we attempted to tear ourselves away, we could all say with true sincerity: 'parting is such sweet sorrow/  
That I shall say good night till it be morrow.'



# Young Writers 2023

17 of our wonderful students have been published in the latest Young Writers National Poetry Anthology: The Power of Poetry. The anthology, split into two collections, explores how poetry can be used as a tool of protest, a voice of reason, and the method of awareness for issues plaguing society and the world today. Our students' poems are insightful, moving, funny, and fierce, covering a wealth of topics. Our students give voice to the voiceless, and a home to all that has been ignored.

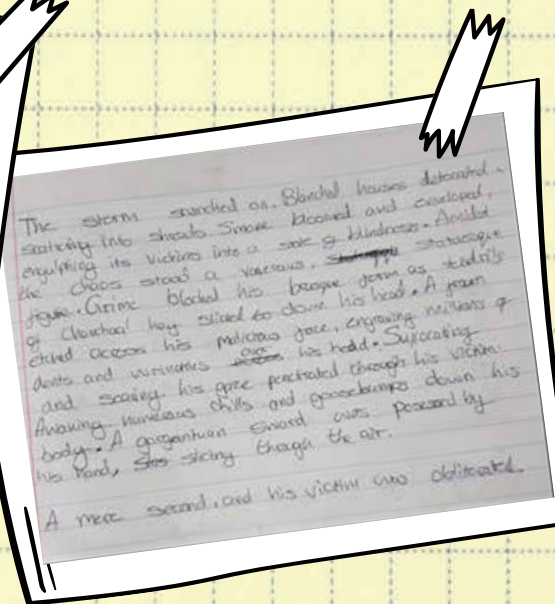
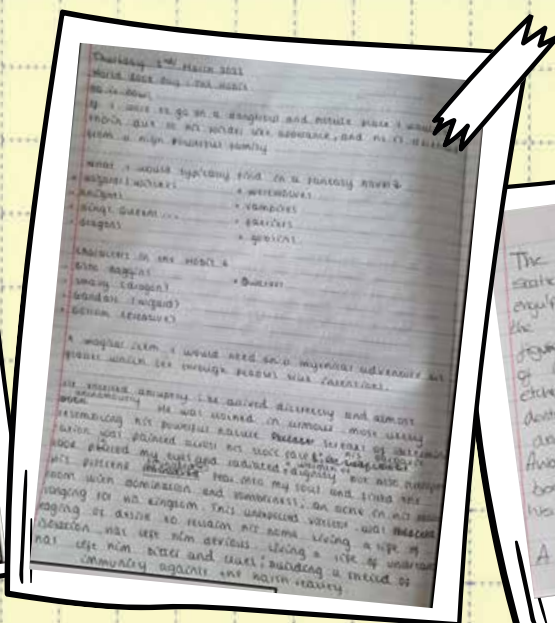
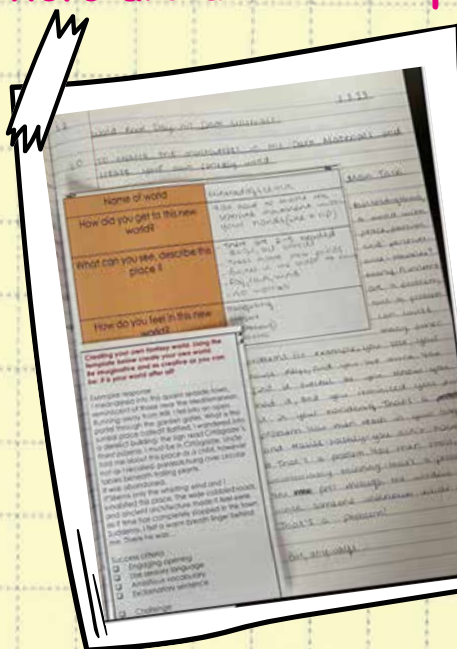
# World Book Day 2023

On Thursday 2nd March, the English department was filled with the sounds of excitement, awe and wonder, as students entered the magical world of fantasy and fiction. Students explored a range of texts, from Peter Pan to The Hobbit, and delighted in the innovative activities their teachers had planned: from writing their very own scripts, to performing monologues in class.

There was a healthy buzz of competition as they sought to write the wittiest encounter between Peter Pan and Hook, the most emotive monologue from the perspective of the cowardly lion, or the most creative character description.

Students were enthralled at the idea of being able to express themselves in a World where once again, literature is brought to life.

Here are a few examples of work students produced on World Book Day:

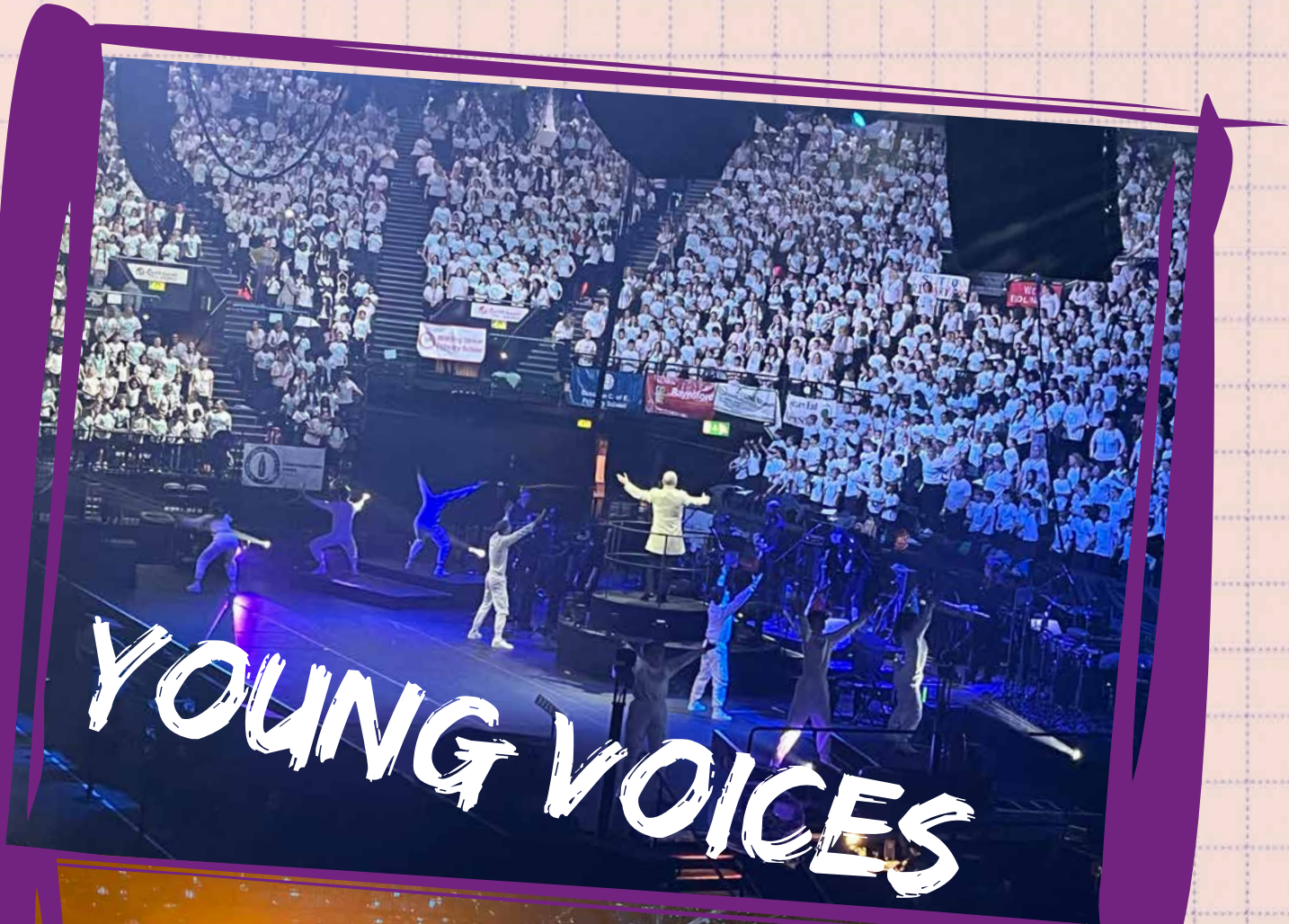




# MUSIC

Year 5, 6, 7 and 8 pupils went to Resorts World Arena on the 26th of January to take part in the national singing project "Young Voices". These students are the members of the Waverley Choir and they have been practising the variety of songs especially for this event. They were singing along with 6000 other children and some celebrities including Heather Small with the song "Proud". It was an exciting and overwhelming experience for students and staff. A big Thank You to Mr Abley, Mr McAuley, Miss Malik, Miss Knight, Mrs Akhtar and Mrs Cooper for their amazing support with the trip.

A big Thank You to Mr Abley, Mr McAuley, Miss Malik, Miss Knight, Mrs Akhtar and Mrs Cooper for their amazing support with the trip.





# PE NEWS

## Year 9/10 Cricket Team



On the 23rd January, our Year 9/10 cricket team went through to the Edgbaston indoor finals. Yardley School won the toss and chose to bat first. They gave Waverley 77 runs to chase thanks to an excellent bowling display from AM and YM. Waverley went on to comfortably win the game with 2 overs and 2 wickets to spare thanks to RK and SH batting display. Waverley have won all 3-league games and now will compete in the finals in May! Well done boys!

## Year 8 Football Team

On the 9th February, our year 8 football team took part in a tournament at Small Heath. We finished runners up out of 6 teams staying unbeaten and conceding 0 goals. Our Year 8's drew 3 games and won 2 finishing with 9 points. They showed great commitment and togetherness throughout only finishing one point away from winning the tournament.





# WAVERLEY STUDIO COLLEGE

## Business Studies

**Our Year 13 Business students have been preparing for their Unit 6 Exam. The unit is about the Principles of Management.**

The Human Resource (HR) function is integral to the unit. We invited Mrs Aslam (Director of HR) to come in and talk to our students about the HR function and how it is applied within our trust. Well, who would know that there was also a budding teacher, waiting to shine, within HR. Mrs Aslam was so gracious in giving up her time for us, preparing a presentation and handouts for the session. The students were able to link their

learning, to a real life professional. One of the points that Mrs Aslam made was about background checks into social media posts, for applicants. This really sank in and we hope that our students take this on board, moving forward. They also really appreciated Mrs Aslam for putting the role into a real life context. She was amazing!



## CHILDCARE, HEALTH & SOCIAL CARE WORK PLACEMENTS

**As part of the Level 3 Childcare and Health and Social Care courses that we run at Waverley Studio, all students have to complete an allocated number of working placement hours.**

Students have to attend these placements weekly and work alongside Educators and established health care professionals.

It can be a challenge placing our students as every college, school and university are requesting placements for their students.

We only use Ofsted Good and Outstanding placements so our expectations are high from both the placements and conduct of our students.

It is always a pleasure visiting our students on placements, watching them carry out their tasks and working in

collaboration with professional members of staff.

I am so pleased to share with you fantastic comments from both Graceland's Nursery and Ward End Primary School in respect of the conduct from our students placed there.

Massive shout out to AD Year 12 Childcare, the staff there had nothing but praise for her, supporting other staff and students in class, developing positive relationships and excellent communication skills.

Another Mega shout out for NK, Year 13, RJ, FS, Year 12, all placed at Ward End Primary, the Head Teacher personally spoke to me about the outstanding progress made by all these students, continually demonstrating high standards of practice and support for both the children and their peers.

I can back up all the lovely comments and feedback with my own on site observations and assessments.

**Well done to you all.**



# Year 10 Science

One of our Science teachers, Mr Hambeh, set aside some time to speak to our Year 10s about being a sole trader.

They had been taught about types of ownership and the associated liabilities. So, in order to make it more relatable for them, we invited Mr Hambeh to speak to the group about his experiences, since he has been running his own business for a few years now. Furthermore, he was able to put across his story of what inspired him to tutor young people, prior to training as a qualified teacher. The students were very receptive of his lesson, making notes as he spoke and asking intriguing questions. Mr Hambeh, one of our ECT teachers delivered an inspirational talk. **Thank you!**



BE YOUR  
OWN BOSS

## LITERACY AND DEVELOPING VOCABULARY



FREE RICE

### Global stats

Grains of rice donated yesterday :  
**15,039,297**

Over **220 billion** lifetime grains.

kudos means:

praise

brotherhood

doctor

franchise

We would also like to share a website that we use, that helps give food to countries as part of the UN Food Programme and is also a brilliant way of developing students' vocabulary during form time. We've been using it and students really enjoy it. The website is:

<https://freerice.com/>



English  
Vocabulary

0



# Year 11 GCSE Poetry Live

On Tuesday 17th January 2023 we saw our lovely Year 11 students visiting Symphony Hall in Birmingham to see live performances and workshops from some of the poets they are studying as part of their AQA GCSE English Literature course. It was a brilliant day and we even got to meet some of the poets personally! Our students also got the opportunity to ask the poets questions about their poetry and sources of inspiration.

Here is what some of our students had to say about the trip:

**Mo:** 'The trip was amazing!'

**Saif:** 'The trip was very meaningful.'

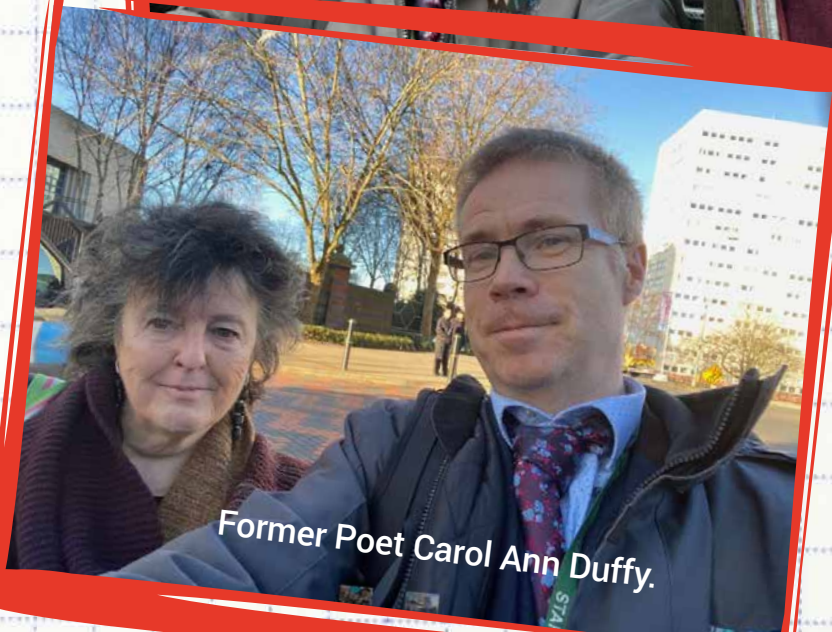
**Maryam:** 'The trip was informative.'

**Hashim:** 'The first time going to Symphony was wonderful.'



Presenter Daniel Power is pictured here, starting proceedings.

Mr Gallagher and Ms Jahangir meet the legendary poet John Agard. Our students are studying his poem 'Checking Out Me History' as part of their GCSE exams.



Former Poet Carol Ann Duffy.



# VALUES ASSEMBLY EQUALITY

## Martin Luther King Day

On Jan 15th, Waverley Studio College celebrated Martin Luther King Day with an assembly on Equality, led by Tariq and supported by four Year 10 students Zaviyan, Hamayl, Ranaa and Saanvi. The assembly was very thought provoking and very well received by the students in Years 10 and 11.

As part of the assembly Hamayl, Ranaa and Saanvi read out three poems that they had written themselves about equality. All the poems were outstanding and I have added Ranaa's poem opposite.

## EQUALITY

Why should our skin define us?  
Why should our differences deny us?  
We are all equal, so why feel the need to hate?  
Why allow ourselves to separate?  
Our different concepts and beliefs, Shouldn't mean we should segregate  
Beneath the surface,  
We are all the same,  
No need to discriminate because of race and faith.  
When our eyes are open,  
Do we always see the truth?  
No, instead we see with bias views  
Imposed with our youth  
Instead of being threatened by differences,  
Let's change the way we feel,  
And see the beauty in real.

We often tend to forget the main ethos while working in a community whether it's a school or a workplace, the main motive behind each professional setting is to equally provide our colleagues with their respective necessities. We strive to find people only of our own kind due to the typical mentality that we have but for once if we try to connect and interact with different souls by exposing ourselves to new environments, it will contribute a lot to humanity and character building itself. I think that its high time to increase interaction to make people feel socially accepted and also for the sake of making a positive change in the society by helping people fit in easily. Here's a short poem I wrote on the main premises of equality and diversity.

By HJ, Year 10

As the moon sets the night sky ablaze  
As the glimmering, stars enhance its phase  
Diversity is to appreciate not to discriminate  
Understanding the needs, to help, and facilitate  
To protect regardless of race, class and faith  
To reconcile humanity and revive its grace  
By changing the lens through which we see the world  
By moving ahead and analyzing its worth  
By comprehending through another perception  
Let's collectively work towards normalization not perfection.

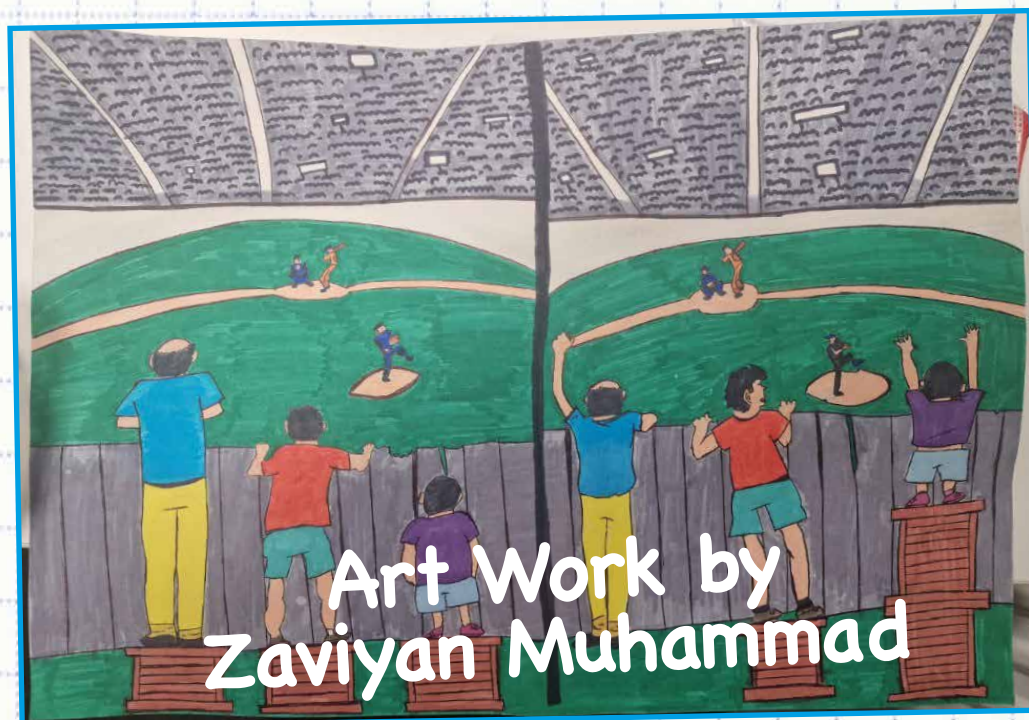
By SB, Year 10

Good morning, everyone. I'm Saanvi. Today I'm going to be speaking about what equality means to me. Firstly, what is equality? Equality is when every person is treated equally regardless of their race, religion, gender, nationality or their appearance. So, now that we have established that, do you think that we are living in a world that has achieved complete equality? No, not completely. We certainly are living in a better society compared to the past. But, there still are instances where people have been treated unfairly or have been denied their rights based on their religion, race, gender, nationality, ethnicity, appearance or their skin colour. Achieving an egalitarian society is highly important. It is important because everyone must get the equal chance at reaching their full potential and achieving their goals. When people are oppressed or marginalised, it limits their growth and their ability to contribute to the society, this as a result stunts the overall growth of the society. People shouldn't get more priority for colleges or jobs because they are rich, their skin colour, their religion or their gender, rather they should get it based on their knowledge, experience and skills.

Recently, gender equality and feminism movements have made a huge impact on society. I totally support it. Whenever the term 'gender equality' is heard, most people think that it is more female or women oriented. Trust me, it isn't. The dictionary definition of gender equality is that people of all genders are treated equally, given equal opportunities, responsibilities. Gender inequality has an impact on everyone: women, men, trans and gender diverse people, children and families. In fact, even men are influenced and affected by gender stereotypes. For example, men aren't very vocal about mental health issues because of the stereotype that it might make them seem less manly. So, we can conclude that gender

inequality affects all the genders equally. We must change this, so that everyone can feel sensitive, be themselves and can express themselves without being judged. That change is YOU. Only you can change the world and pave a future to an egalitarian society where every person has equal opportunities, responsibilities and rights. Our future is in our hands. We must harness this opportunity to change the world. So, let's start by treating everyone equally from now on. Let me end this with a very thoughtful quote by Maya Angelou:

'We all should know that diversity makes for a rich tapestry, and we must understand that all the threads of the tapestry are equal in value no matter what their colour.'





# VALUES ASSEMBLY ASPIRATION

Our shared values of Humanity, Equality, Aspiration and Respect are there to be lived, every minute of every day. In our Aspiration assembly, we explored the importance of failure as something that we can all learn from as we grow and develop.

These are some of the highlights from Waverley Studio College as we live our shared values of: Humanity, Equality, Aspiration and Respect.





# Year 10 and Year 11 Box Clever Theatre - Macbeth

On Wednesday 8th February 2023, we welcomed a return visit from Box Clever Theatre Company, who put on a fantastic, interactive performance of 'Macbeth', followed by a series of very active workshops to help develop and deepen students' understanding of the famous Scottish play.

Both Year 10 and Year 11 found the experience mesmerising and engaging. What was also lovely to hear, speaking with the actors, was their high praise for the lovely, productive, family atmosphere they felt working with our lovely students throughout the day. They were very impressed with the students' positive work, effort, behaviour and attitude overall. A massive thank you to Box Clever, and to our brilliant staff and fantastic students for what was a very productive, informative and engaging day.



# SIXTH FORM NEC TRIP



Sixth Form students attended the 'What career? What University?' event at the NEC on Friday 3rd March 2023. Students took part in one to one careers advice workshops, spoke to a range of Universities from across the UK and attended CV clinics delivered by professionals.

Students enjoyed their day and have gained inspiration for future applications, as well as information that will be valuable to their future careers.



# Attendance

Attendance is a vital aspect of a student's educational journey and is monitored throughout pivotal steps in developing their future through higher education and in employment. It is also directly linked to attainment and success, as studies have shown those who attend regularly are significantly more likely to achieve greater attainment outcomes, for example through better grades. At Waverley Studio College, the minimum expectation of student's attendance is 97%.

Where this is not achieved, we engage in parent/carer workshops to go through the importance of their children's attendance and invite them for meetings as an opportunity to raise areas of concern and to see how we can collectively encourage improved attendance. We also liaise with external professionals to encourage and achieve the target of 97%.

In relation to attendance, punctuality is also an essential component in encouraging great attendance. To increase

and stress the importance of punctuality and attendance, we will also open a Breakfast Club to provide the students with an incentive to come to school on time with the added benefit of starting the day with a healthy breakfast. This can be a help to families especially against the backdrop of the current economically difficult times, as well as providing students with a great opportunity to socialise and perhaps get to know more of their peers whilst also ensuring punctual arrival to school for participants.

## WEFT Careers Update

We have had recent events regarding Careers and Employer Engagement with WEFT Students

**Severn Trent EA Employer** - Events have been with Y8 on 3Ps Science and Sewage.

**Speed Networking** - Range of corporate employers came in and participated with KS4 and KS5 Students on a rotational, round table event.

**Focus on job interview preparation** - thinking outside the box, experience, how to stand out, etc. Students came prepared to ask employers questions to further their understanding.

**121 Career Guidance sessions** - are taking place with all Y11 and Y13 Students across both sites. This enables WEFT to fulfil its statutory requirements and student entitlement.

**Apprenticeship Week** - a range of virtual events were sent to students to participate. Amongst these events and the PAL Duty, we had live employer event with Bidfood [https://youtu.be/iO\\_HNj5lzeo](https://youtu.be/iO_HNj5lzeo). Who did the talk on their range of apprenticeships, this is being followed up with a in person event on the 20th March. The Bidford National L&D Manager and several Apprentices will be in attendance to participate in the Q&A session with students from all key Stages.

**Careers Week** - A range of virtual events have been sent out to students to participate.

**International Women's week** - A range of virtual events have been sent out to our Female/non-binary students. Virtual live events from the CPS and EY.



# WAVERLEY SCHOOL DIRECT

## Thinking about becoming a teacher?

Are you, a family member or someone you know thinking about becoming a teacher? We are currently recruiting for our secondary PGCE courses starting September 2023. We offer a range of subjects and work in partnership with Birmingham City University, plus our local school partners.

There is student support available, including tuition fee loans and generous tax-free training bursaries of up to £27k in high priority subjects (depending on the class of your university degree). Applications are made via the DfE Apply service - search for 'Waverley School Direct'.

To be eligible for a programme, candidates will usually have an honours degree and GCSEs in Maths and English at Grade C/4 or above. Please note that a degree needs to be in a closely related subject to the subject to be taught (approx. 50%).

If you want to make a difference to young people's lives, why not join one of our information events during the summer term? Find out about the recruitment process, different types of programmes, and what being a teacher is like, with the opportunity to ask questions. Sessions run from 16.00 - 17.00:

**Thurs 4 May, Thurs 25 May, Thurs 15 June, Tues 4 July**

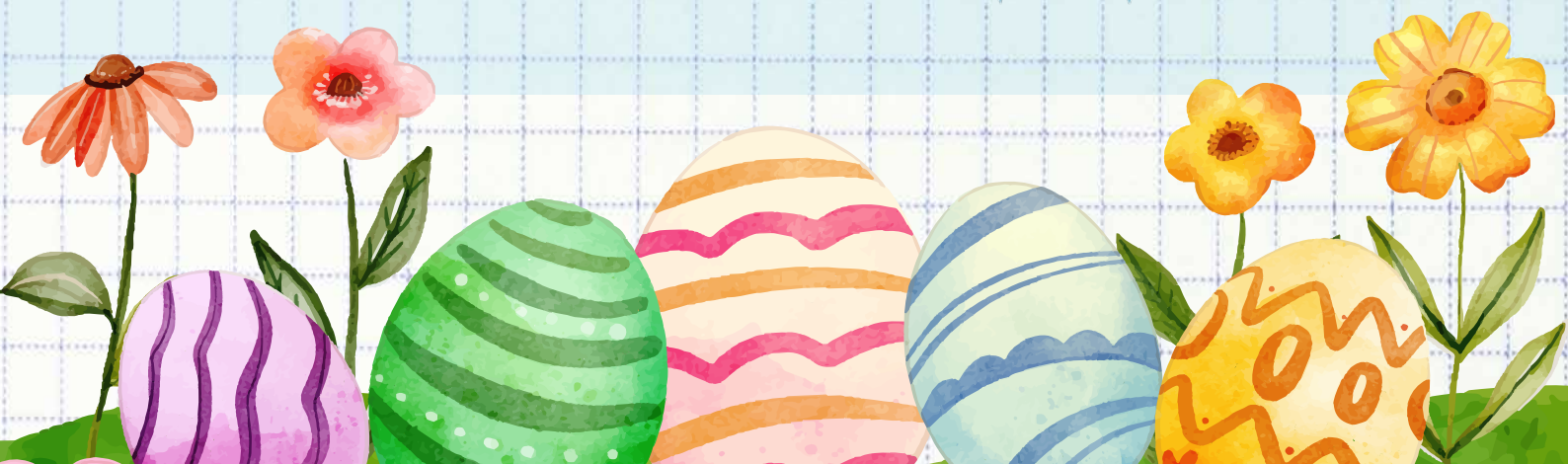
To book a place at an information event or to get in touch with the Waverley School Direct team, contact [Training@waverley.bham.sch.uk](mailto:Training@waverley.bham.sch.uk). We look forward to hearing from you!



**Teach West Midlands**  
*School Direct teacher training across the wider West Midlands*



Waverley  
School  
Direct



WAVERLEY SCHOOL - THE FIRST PURPOSE BUILT ALL - THROUGH SCHOOL IN BIRMINGHAM  
311 Yardley Green Road, Bordesley Green, Birmingham B9 5AQ  
E: [enquiry@waverley.bham.sch.uk](mailto:enquiry@waverley.bham.sch.uk)

Tel: 0121 566 6600 [www.waverley.bham.sch.uk](http://www.waverley.bham.sch.uk)

 Waverley School @Waverley\_School

